

# Exhibitions

October 2017 – February 2018

**PALLANT  
HOUSE  
GALLERY**



# Bomberg

21 Oct – 4 Feb 2018

Rooms 12–16

A major review of the life and career of David Bomberg (1890–1957), revered as one of the greatest British artists of the 20th century, marking the 60th anniversary of his death.

Taught by Walter Sickert and part of the Slade School of Art's golden generation, Bomberg in turn taught artists including Frank Auerbach and Leon Kossoff, and inspired the formation of the Borough Group in 1946. The exhibition explores key themes within the artist's remarkable career including engagement with his Jewish East End upbringing, his contribution to pre-war British modernism and his role as a war artist in both World Wars, his achievements as a graphic artist and in landscape painting, in particular in Spain and Palestine, and his self-portraits and portraits of friends and family.

Curated by Ben Uri Gallery and Museum in association with Pallant House Gallery. The exhibition tours to The Laing Art Gallery and Ben Uri during 2018.



In partnership with



Sponsored by  
**Daniel Katz Ltd**

Supported by  
The Doric Charitable Trust  
The John Young Charitable Settlement  
Simon Mark Lazarus Charitable Foundation  
Bomberg Supporters' Circle

## Paula Rego: The Sketchbooks

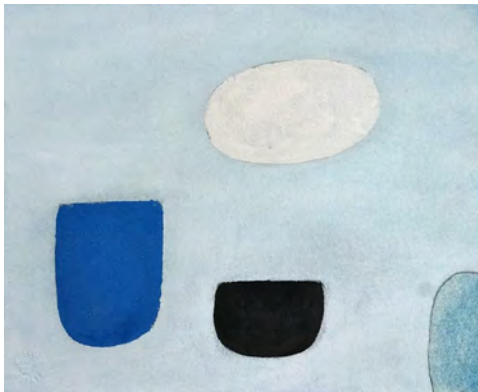
30 Sep – 28 Jan 2018

Room 3–4

A rare opportunity to see Dame Paula Rego's preparatory sketches, providing an insight into her remarkable draughtsmanship and the development of her ideas.

Born in Lisbon, Portugal in 1935, Rego has a career that spans over half a century and since her studies at the Slade School of Fine Art in London, has travelled consistently between the two countries. Using folklore and fairy tales, both personally constructed and widely known, Rego's work builds narratives of both trouble and fantasy, often leaving reality behind in favour of a religious fervour.

The exhibition draws largely from sketchbooks from the 1980s and 90s, including studies for some of her most famous works and provides a new understanding of the work of one of Britain and Portugal's most loved figurative artists. It coincides with an exhibition of Rego's recent paintings at the Jerwood Gallery in Hastings.



## An Architect's Eye: The Peter Collymore Gift

18 Oct – 11 Feb 2018

De'Longhi Print Room

A view of Modern British art through the eyes of the architect Peter Collymore, who designed the Library for the Britten-Pears Foundation and whose collection has recently been gifted to Pallant House Gallery. The exhibition includes drawings, paintings, prints and sculptures by Eileen Agar, Antony Caro, Prunella Clough, John Piper and Pablo Picasso.



## Nigel Henderson: A Centenary

14 Oct – 4 Feb 2018

Room 9

Nigel Henderson (1917–1985) was a transitional figure in the post-war British art world before the emergence of Pop Art in the 1950s and 1960s. A documentary and experimental photographer and artist who was close friends with Eduardo Paolozzi and Richard Hamilton, he was known for his 'Hendograms' and 'stressed' photographs.



## Spirit in the Mass: Bomberg's Legacy

21 Oct – 4 Feb 2018

Room 17

A display celebrating David Bomberg's radical influence on the young artists he taught at the Borough Polytechnic between 1945 and 1953, including Dinora Mendelson, Frank Auerbach, Lilian Holt, Leslie Marr and Leon Kossoff. Whilst some exhibited together as the Borough Group, others were influenced by his belief in capturing the pure essence of a subject, which he called the 'spirit in the mass'.



## Contemporary Installations

**Pablo Bronstein: Wall Pomp**

18th century stairwell

**Lothar Götz: Composition for a Staircase**

Stairwell of the new wing

**Laura Ford: Beauty in the Beast**

Courtyard Garden





# Gallery Sponsors and Supporters

## Gallery Supporters



Supported using public funding by  
**ARTS COUNCIL  
ENGLAND**



Headline Sponsor  
of the Gallery



Collection displays  
supported by

**TOOVEY'S**

## 21st National Open Art Winners' Exhibition

6–17 Dec 2017

Room 11

An opportunity to see the winning works from the 2017 National Open Art competition, the biggest independent art prize, featuring a diverse cross-section of the brightest British and Irish contemporary art, photography and film.

## Studio Exhibitions

### We've Been There

4 Oct – 19 Nov 2017

The exhibition follows the shared journey of Keith Honeyman and Bridget Peachey as Partners In Art. Starting with inspiration in the Gallery, they enjoy mutual enthusiasm for painting outdoors in harbour and wetlands areas and paint together on one canvas.

### Community Programme Fundraising Exhibition

22 Nov – 25 Mar 2018

A vibrant and diverse array of artwork donated by members of the Community Programme will be on sale to raise funds to support many aspects of the Community Programme including Partners in Art and the Pallant Creative Collective.

### Image Credits (from left to right)

First panel (From Top): David Bomberg, Jerusalem City and Mount of Ascension, 1925, Ferens Art Gallery, Hull © The Estate of David Bomberg; David Bomberg, Ronda Bridge, 1935, Pallant House Gallery © The Estate of David Bomberg; David Bomberg, Ju-Jitsu, c.1913, Tate © Tate, London 2017

Second panel (From Top): Paula Rego, Untitled study, n.d., Private Collection © Paula Rego, courtesy Marlborough Fine Art; Paula Rego, Study for Children and their Stories, 1989, Private Collection © Paula Rego, courtesy Marlborough Fine Art; William Scott, Pale Linear Still Life, 1975, gouache on paper, Pallant House Gallery, Chichester (Gift from a Private Collection - Promised as a Future Bequest 2016) © The Estate of William Scott

Third panel (From Top): Nigel Henderson, James Joyce (Head of James Joyce), 1960, Collage and photographic processes, Pallant House Gallery (Wilson Gift through The Art Fund); Leslie Marr, Cirque de Navacelles, 1974, Oil on canvas, Pallant House Gallery (Wilson Gift through The Art Fund); Laura Ford, Espaliered Woman, 2007 © Pallant House Gallery

Fourth panel (From Top): Stephen Burgess, Refugee rescue (detail), 2017, Oil on canvas © The Artist

Pallant House Gallery is a private company limited by guarantee under registered no.5045130 (England and Wales) and a registered charity for England and Wales under no. 1102435. You can help us to care for our world-class permanent collection, invest in our award-winning learning and community programme and deliver exceptional exhibitions. Find out how you can support us: [www.pallant.org.uk](http://www.pallant.org.uk)

Our exhibition programme presents the best of Modern British, international, contemporary and Outsider art. Within the context of our celebrated exhibitions as well as our collections, we offer a wide range of opportunities for people of all ages to learn, discover and explore their creativity.

## Event Highlights

### **Talk: The Spirit in the Mass**

*Thu 2 Nov, 6pm*

*£10 (Students £9, Friends £8.50)\**

Discover how David Bomberg searched for what he described as 'the spirit in the mass' in this hour-long talk delivered by award-winning art critic, historian, broadcaster and curator, Richard Cork. Followed by a complimentary glass of wine. Booking essential.

### **Film Screening:**

#### **Paula Rego: Secrets and Stories**

*Thu 16 Nov, 6pm*

*£10 (Students £9, Friends £8.50)\**

A unique insight into the life and work of celebrated painter Paula Rego, directed by her son Nick Willing. The film will be introduced by Nick Willing and combines a huge archive of home movies, family photographs and interviews spanning 60 years. 90 minutes. Followed by a complimentary glass of wine. Booking essential.

### **Talk: Paula Rego's Drawings**

*Thu 25 Jan 2018, 6pm*

*£10 (Students £9, Friends £8.50)\**

Discover how the practice of drawing has always been central to the work of Paula Rego in this hour-long talk delivered by Colin Wiggins, Special Projects Curator at the National Gallery, London. Followed by a complimentary glass of wine. Booking essential.

\*Thursday evening (5–8pm) admission to temporary exhibitions costs £5.50, FREE for collections.



Book now on 01243 774557, [info@pallant.org.uk](mailto:info@pallant.org.uk) or visit [pallant.org.uk](http://pallant.org.uk) for the full events programme.

Pallant House Gallery's collection of Modern British art is frequently described as one of the best in the UK. It includes important works by Henry Moore, Barbara Hepworth, Lucian Freud, John Piper, Peter Blake and many more. This season our curated displays include two new long-term loans by Walter Sickert.

## Get to know our collection

### Collection Tours

*Every Sat, 2pm, FREE with admission*  
Join our friendly and knowledgeable Gallery Guides for an informal tour of our collection. Tour lasts approx. 30 minutes and explores a different theme each week. No need to book, meet at Reception.

### Artwork of the Month

*Every Wed, 12.30pm & Sat, 12pm  
FREE with admission*  
Join our friendly and knowledgeable Gallery Guides for a focused look at a different artwork from our collection every month. Lasts approx. 15 minutes. No need to book, meet at reception.

### Art Views

*Thu 23 Nov, Mon 11 Dec & Mon 15 Jan,  
Thu 1 Feb 2018, 1.30–3.30pm, £3.50*  
Art Views is an opportunity to look at and discuss selected works from the Gallery's collection. Open to everyone and dementia-friendly. Followed by tea and cake. Booking essential via [l.greenfield@pallant.org.uk](mailto:l.greenfield@pallant.org.uk)

Collection displays supported by

**TOOVEY'S**

Visit [pallant.org.uk](http://pallant.org.uk) to stay up to date with our latest news, exhibitions and events.



Image Credits (from left to right)

Second panel: Photograph by Oana Damir  
© Pallant House Gallery

Third panel: Joe Tilson, 1-5 The Senses, 1963, Mixed media,  
Pallant House Gallery (Wilson Loan, 2006) © The Artist

Fourth panel: David Bomberg, Ghetto Theatre, 1920,  
Ben Uri Collection © Ben Uri Gallery and Museum

## Visit Us

Pallant House Gallery  
9 North Pallant, Chichester,  
West Sussex, PO19 1TJ

### Book Events

01243 774557

[info@pallant.org.uk](mailto:info@pallant.org.uk)

[pallant.org.uk/events](http://pallant.org.uk/events)

### Share

 [pallantgallery](https://www.facebook.com/pallantgallery)

 [pallantgallery](https://twitter.com/pallantgallery)

 [pallanthousegallery](https://www.instagram.com/pallanthousegallery)

### Opening Times

Tuesday – Saturday	10am – 5pm
Thursdays	10am – 8pm
Sundays, Bank Holidays	11am – 5pm
Mondays (exc. Bank Holidays)	Closed
Christmas Eve	11am – 2pm
Christmas Day & Boxing Day	Closed
New Years Day	Closed

### Admission Prices

FREE admission to the ground floor including the De'Longhi Print Room, Studio, Garden Gallery and Courtyard. An admission charge applies to the upstairs galleries which supports the Gallery, a registered charity, in all its work.

Adults	£12.50
Under 16s, Students (NUS)	FREE
Carers	FREE
Friends	FREE
Tuesdays	£6.50
Thursday evenings (5–8pm)	£6.50*

\* FREE for collection

Other concessions are available.

Group visits including schools, colleges and universities welcome by arrangement.

## Getting Here

**By Train:** A 5-minute walk from Chichester railway station. Direct train links from London, Brighton and Southampton.

**By Road:** There are 10 car parks in and around central Chichester.

**By Bus:** All bus routes pass down South Street, a 2-minute walk from the Gallery via West Pallant.

## Accessibility

Pallant House Gallery aims to be accessible to all and offers a number of provisions such as street level entrances, lifts to all floors, induction loop systems and bookable wheelchairs. For complete access details please call 01243 774557.

## Eating and Shopping

Visit the Pallant Restaurant and Café for delicious, fresh and seasonal food in a unique setting, and the award-winning Pallant Bookshop for the very best art books, prints and multiples, gifts and cards.

## Become a Friend

Friends enjoy unlimited access to the Gallery, exclusive trips and events, FREE copies of the Pallant House Gallery magazine, and discounts on tickets to many Gallery events. Your annual membership will help to support the Gallery in all its work. Visit [pallant.org.uk](http://pallant.org.uk) for more information or call 01243 770816.